



500 Series Distribution Systems

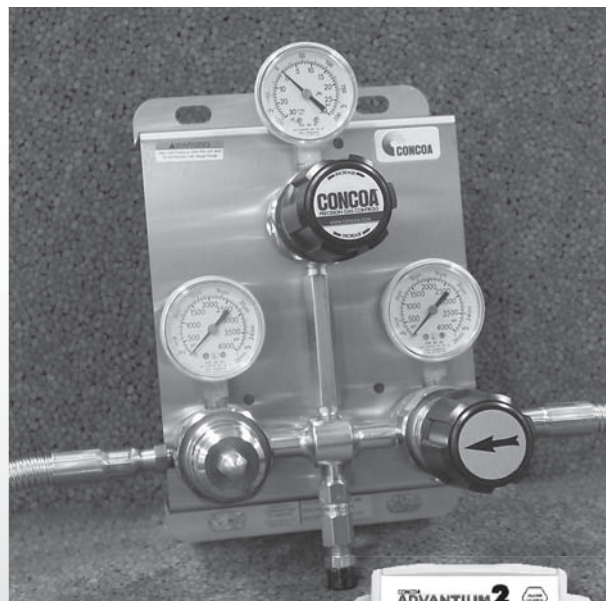


Switchover

The 526 Series Switchover is an automatic switchover system designed to supply a continuous supply of high purity, non-corrosive gas. The system comes with either flexible hoses for use with two cylinders or manifold connectors for use with the Maniflex Modular Manifold System. Due to pressure differential considerations, an integral line regulator is available to maintain constant downstream pressure.

Typical Applications

- Ultra high purity gases
- GC carrier and support gases
- AA grade acetylene
- Cell culture incubator CO₂ and N₂
- Pure and mixed process gases



Shown with attached flexible hoses. Available with optional remote alarm.

Ask About Our

**EXTENDED
WARRANTY**

On This CONCOA Product



Features

400 Series Brass Barstock Regulators
Capsule® seat

Metal-to-Metal Diaphragm Seal
No possibility of gas contamination

User-Friendly
One knob switches cylinder priority

Check Valves in Hose Inlet Glands
Prevents contamination and back flow

Compatible with Maniflex Manifolds
Multiple cylinders per side

Optional Line Regulator
Stable line pressure during change over

Optional Remote Alarm
Easy integration with Advantium system

Materials

Bodies
Brass barstock

Diaphragms
316L stainless steel

Seats
PTFE
PCTFE with 4500 PSIG inlet

Filters
10 micron sintered bronze

Internal Seals
PTFE

Specifications

Maximum Inlet Pressure
3000 PSIG (210 BAR)
4500 PSIG (310 BAR) optional

Temperature Range
-40°F to 140°F (-40°C to 60°C)

Gauges
2" diameter brass

Outlet Connection
1/4" MPT (without line regulator)
1/4" FPT (with line regulator)

Helium Leak Integrity
1 x 10⁻⁸ scc/sec

Cv
0.1

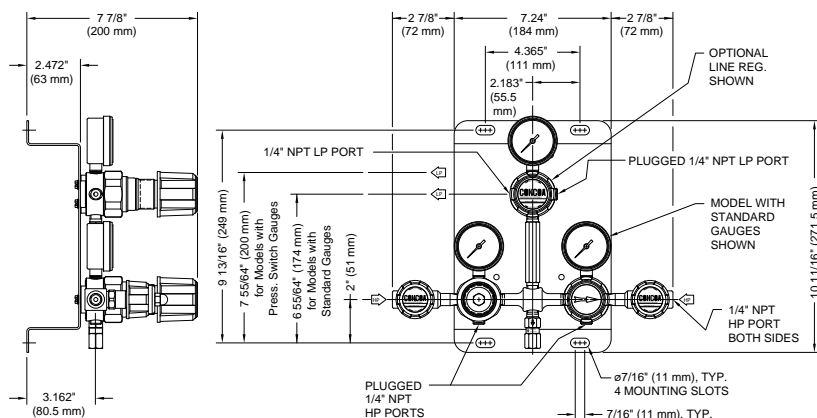
Weight
8.25 lbs. (3.71 kg)

500 Series Distribution Systems

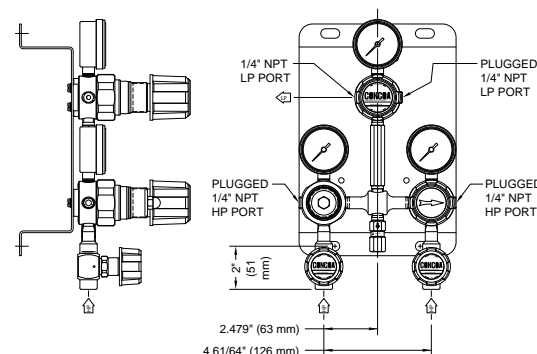


Installation Information

Diaphragm Valves on Side Ports



Diaphragm Valves on Bottom Ports



Ordering Information

526	A	B	C	D	-CON
Series 526	Switching Pressure (Priority R/L)	Inlet Connection	Line Regulator	Assembly	Hose
	1: 125/105 PSIG*	0: 1/4" FPT ports	0: None	1: 0-4000 PSI/kPa gauges* no alarm capability	Please specify inlet connection (if applicable)
	2: 70/50 PSIG*	1: Flexible stainless steel hoses (36")	1: 0-15 PSIG	2: 0-4000 BAR/PSIG gauges* no alarm capability	
	3: 100/75 PSIG	2: Manifold connectors*	2: 0-50 PSIG	3: 0-4000 BAR/PSIG* with pressure switches† and 110V remote alarm	
	4: 200/170 PSIG	3: Flexible stainless steel hoses (24")	3: 0-100 PSIG	4: 0-4000 BAR/PSIG* with pressure switches† and 220V remote alarm	CGA DIN 477 BS 341 and others available
	5: 500/470 PSIG	4: Diaphragm valves with 1/4" FPT port	4: 0-250 PSIG	5: 0-600 BAR/PSIG gauges no alarm capability	
	7: 150/130 PSIG	5: Diaphragm valves with hoses (36")	5: 0-400 PSIG	6: 0-600 BAR/PSIG with pressure switches† and 110V remote alarm	
	8: 300/270 PSIG	6: Diaphragm valves with manifold connectors*	7: 0-150 PSIG	7: 0-600 BAR/PSIG with pressure switches† and 220V remote alarm	
	Not available with 4500 PSIG inlet Note: switching pressure must be higher than line regulator pressure selected in column C.	7: Diaphragm valves with hoses (24")	A: 0-15 PSIG redline for acetylene	8: 0-4000 BAR/PSIG with pressure switches† and without remote alarm	*0-6000 PSI gauges with 4500 PSIG maximum inlet option †Intrinsic safety barriers are required for flammable gas service or for use in hazardous environments.
		8: Flexible stainless steel hoses (36") (4500 PSIG maximum inlet pressure)		9: 0-600 BAR/PSIG with pressure switch and without remote alarm	
9: 1/4" FPT ports (4500 PSIG maximum inlet pressure)					
A: Flexible stainless steel hoses (36") with flashback arrestor for acetylene					
B: Flexible stainless steel hoses (36") with flashback arrestor for acetylene and with diaphragm valve					
	* See pages 36-37 for manifold ordering information				